

Glucagon Antibody
Rabbit mAb
Catalog # AP91054**Specification**

Glucagon Antibody - Product Information

Application	WB, IHC
Primary Accession	P01275
Reactivity	Rat
Clonality	Monoclonal
Other Names	
GCG; Glicentin; Glicentin-related polypeptide; GLP-1;; GLP-2; GLP1; GLP2; GLUC; Glucagon; GRPP; OXM; OXY;	
Isotype	Rabbit IgG
Host	Rabbit
Calculated MW	20909 Da

Glucagon Antibody - Additional Information

Dilution	WB~~1:1000 IHC~~1:100~500
Purification	Affinity-chromatography
Immunogen	A synthesized peptide derived from human Glucagon
Description	GCG Glucagon plays a key role in glucose metabolism and homeostasis. Regulates blood glucose by increasing gluconeogenesis and decreasing glycolysis. A counterregulatory hormone of insulin, raises plasma glucose levels in response to insulin-induced hypoglycemia. Plays an important role in initiating and maintaining hyperglycemic conditions in diabetes.
Storage Condition and Buffer	Rabbit IgG in phosphate buffered saline , pH 7.4, 150mM NaCl, 0.02% sodium azide and 50% glycerol. Store at +4°C short term. Store at -20°C long term. Avoid freeze / thaw cycle.

Glucagon Antibody - Protein Information**Name** GCG ([HGNC:4191](#))**Function**

[Glucagon]: Plays a key role in glucose metabolism and homeostasis. Regulates blood glucose by increasing gluconeogenesis and decreasing glycolysis. A counterregulatory hormone of insulin, raises plasma glucose levels in response to insulin-induced hypoglycemia. Plays an important role

in initiating and maintaining hyperglycemic conditions in diabetes.

Cellular Location

Secreted.

Tissue Location

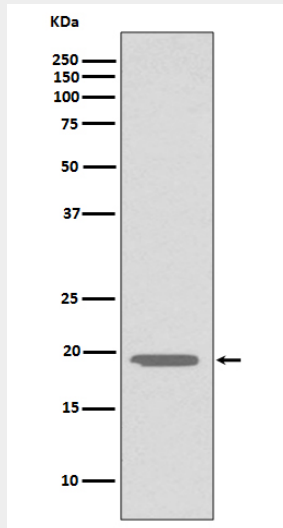
[Glucagon]: Secreted in the A cells of the islets of Langerhans. [Glucagon-like peptide 2]: Secreted from enteroendocrine cells throughout the gastrointestinal tract. Also secreted in selected neurons in the brain [Oxyntomodulin]: Secreted from enteroendocrine cells throughout the gastrointestinal tract

Glucagon Antibody - Protocols

Provided below are standard protocols that you may find useful for product applications.

- [Western Blot](#)
- [Blocking Peptides](#)
- [Dot Blot](#)
- [Immunohistochemistry](#)
- [Immunofluorescence](#)
- [Immunoprecipitation](#)
- [Flow Cytometry](#)
- [Cell Culture](#)

Glucagon Antibody - Images



Western blot analysis of Glucagon expression in HepG2 cell lysate.